



# VULCAN

*THE NEXT GENERATION*



# *PRODUCT RANGE*



VULCAN Completion Products was founded in 2017 by a team of industry professionals whose careers specialise in the design and manufacture of engineered solutions for the completions market within the global Oil & Gas Industry.

Together the team has over 100 years' application, design and manufacturing experience, and has been responsible for introducing ground breaking, innovative products to the completions market over the past 25 years.

The industry is always driving forward, seeking new equipment and solutions. VCP are striving to offer innovation and truly engineered solutions, with application based ideas, concentrating on setting new performance standards for our revolutionary products, built to cope with the world's most demanding wells.

Our team has an unmatched record of success, with our emphasis on being a high quality service provider, delivering to our client's requirements and expectations.

**PATENTED**



**PHAZER™ : FLEX**



**PHAZER™ : SUB**



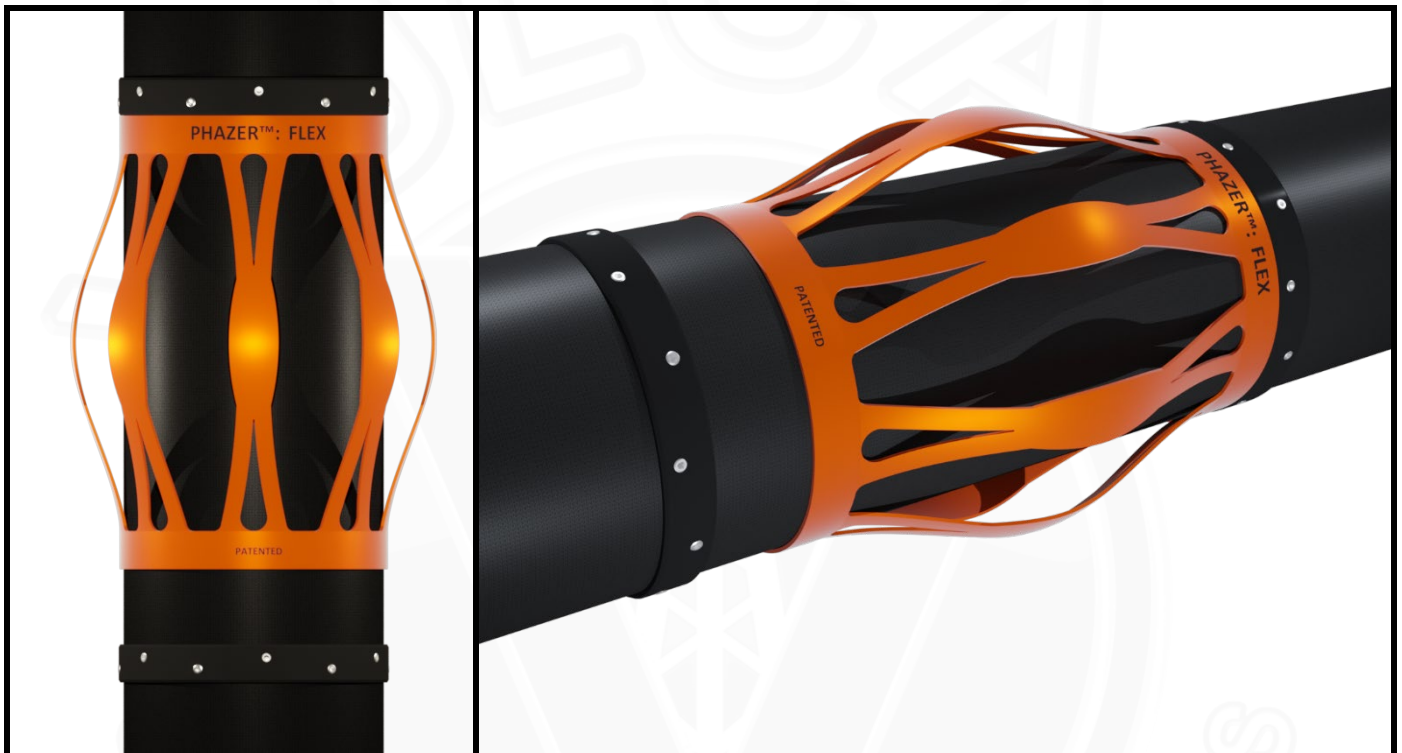
**PHAZER™ : SR**



**PHAZER™ : FUSION**

## ***PHAZER™: FLEX***

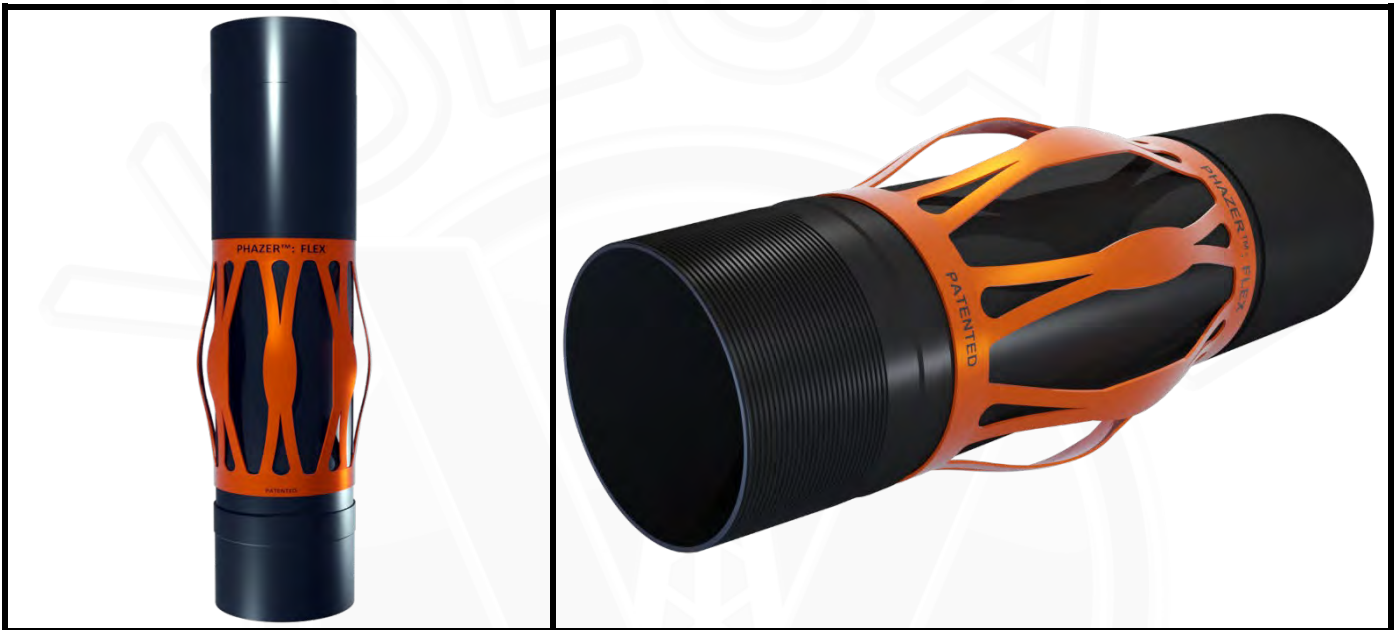
***Vulcan's PHAZER™: FLEX patented Under-reamed centralizer has been designed to glide through previous cased hole restrictions and open to provide a high level of Stand-off in the open hole.***



- Engineered for under-reamed application.
- Innovative variable blade design. Each blade working independently during insertion and RIH.
- Superior Stand-off guarantees improved zonal isolation.
- Significantly reduced running forces reduces accumulative drag forces during RIH.
- API testing and beyond, operators testing requirements will be met.
- One-piece robust construction, suitable for rotation, withstanding high radial & axial loads.
- Flexibility – proprietary manufacturing process' and high strength spring steel material offers a centralizer that performs equally in close tolerance cased hole and open hole applications.
- Sizes tested and available – 5-1/2" - 24".
  
- Please contact [Sales@Vulcan-CP.com](mailto:Sales@Vulcan-CP.com) for test reports.

## **PHAZER™: SUB**

*Vulcan's PHAZER™: SUB is an in-line centralizer sub specifically designed for passing through long sections of previous casing with annular clearances <0.25" & recovering to provide the best conditions for good zonal isolation in under-reamed open-hole sections.*



- Engineered for under-reamed application.
- Innovative variable blade design. Each blade working independently during insertion and RIH.
- Superior Stand-off guarantees improved zonal isolation.
- Significantly reduced running forces reduces accumulative drag forces during RIH.
- API testing and beyond, operators testing requirements will be met.
- Robust construction, suitable for rotation, withstanding high radial & axial loads.
- Flexibility – proprietary manufacturing process' and high strength spring steel material offers a centralizer that performs equally in close tolerance cased hole and open hole applications.
- Sizes tested and available – 5-1/2" - 24".
- Please contact [Sales@Vulcan-CP.com](mailto:Sales@Vulcan-CP.com) for test reports.

## **PHAZER™: SR**

**Vulcan's PHAZER™: SR centralizer is a one-piece heavy duty centralizer that has been specifically designed for gauge hole centralization, offering 100% stand-off.**



- Heavy Duty One-Piece Construction providing flexibility and strength.
- Suitable for rotation, withstanding high radial & axial loads.
- Zero Starting & Running forces.
- Maximized Stand-off & Flow-by.
- High Restoring force exceeding API requirements. Superior Stand-off guarantees improved zonal isolation.
- Suitable for onshore installation reducing health and safety risk and reducing rig time.
- Split & hinged option available upon request.
- Sizes tested and available – 4 ½” – 30”.
- Please contact [Sales@Vulcan-CP.com](mailto:Sales@Vulcan-CP.com) for test reports.

## **PHAZER™: SB**

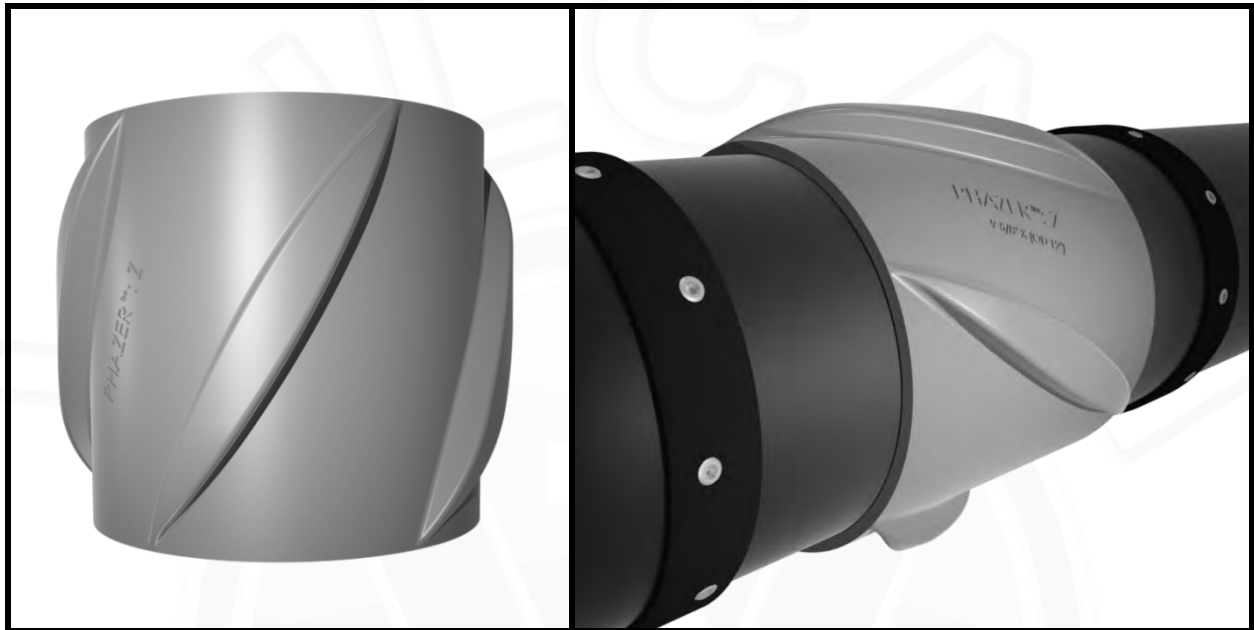
*Vulcan's PHAZER™: SB centralizers are a range of API qualified welded & non-welded bow spring centralizers.*



- Engineered hinged welded & non-welded spring-bow centralizers.
- SB Range.
  - Positive Blade.
  - Tandem Rise Blade.
  - Conventional Blade.
- API 10 D Certified
  - High restoring force.
  - Low starting & running forces.
- API & ISO 9001:2015 rated manufacturing and quality control.
- Size Range 2-7/8" – 30".
- Please contact [Sales@Vulcan-CP.com](mailto:Sales@Vulcan-CP.com) for test reports.

## **PHAZER™: Z**

*Vulcan's PHAZER™: Z is a low friction zinc alloy solid body centralizer designed specifically to reduce torque and drag in ERD wellbores.*



- Low coefficient of friction providing low torque and drag during RIH.
- Suitable for long horizontal and ERD well bores.
- High strength for axial and radial loading.
- Exceptionally durable materials suitable for high temperature wellbores and long-life cycles.
- Full 360° spiral blade.
- Free flow solid blade design provides excellent cement placement and guaranteed stand-off.
- Centralizer placement / T&D analysis available.
- Machinable for bespoke design and reduced OD sizes.
- Split option available.
- Sizes available 2 7/8" – 13 5/8".
- Please contact [Sales@Vulcan-CP.com](mailto:Sales@Vulcan-CP.com) for detailed specifications.

# PHAZER™: ZR RANGE

Vulcan's PHAZER™: ZR RANGE is a low friction Zinc Alloy & Carbon Kevlar Composite solid body centralizer designed specifically to reduce torque and drag in ERD wellbores.

- Low coefficient of friction providing low torque and drag during RIH.
- Suitable for long horizontal and ERD well bores.
- High strength for axial and radial loading.
- Exceptionally durable materials suitable for high temperature wellbores and long-life cycles.
- Full 360° spiral blade.
- Free flow solid blade design provides excellent cement placement and guaranteed stand-off.
- Centralizer placement / T&D analysis available.
- Machinable for bespoke design and reduced OD sizes.
- Split option available.
- Sizes available 2 7/8" – 13 5/8".
- Please contact [Sales@Vulcan-CP.com](mailto:Sales@Vulcan-CP.com) for detailed specifications.

## PHAZER™: ZR

THE ULTIMATE BEARING & DRAG REDUCING CENTRALIZER...



## PHAZER™: ZRD

THE LOW DRAG CENTRALIZER...



## PHAZER™: ZRT

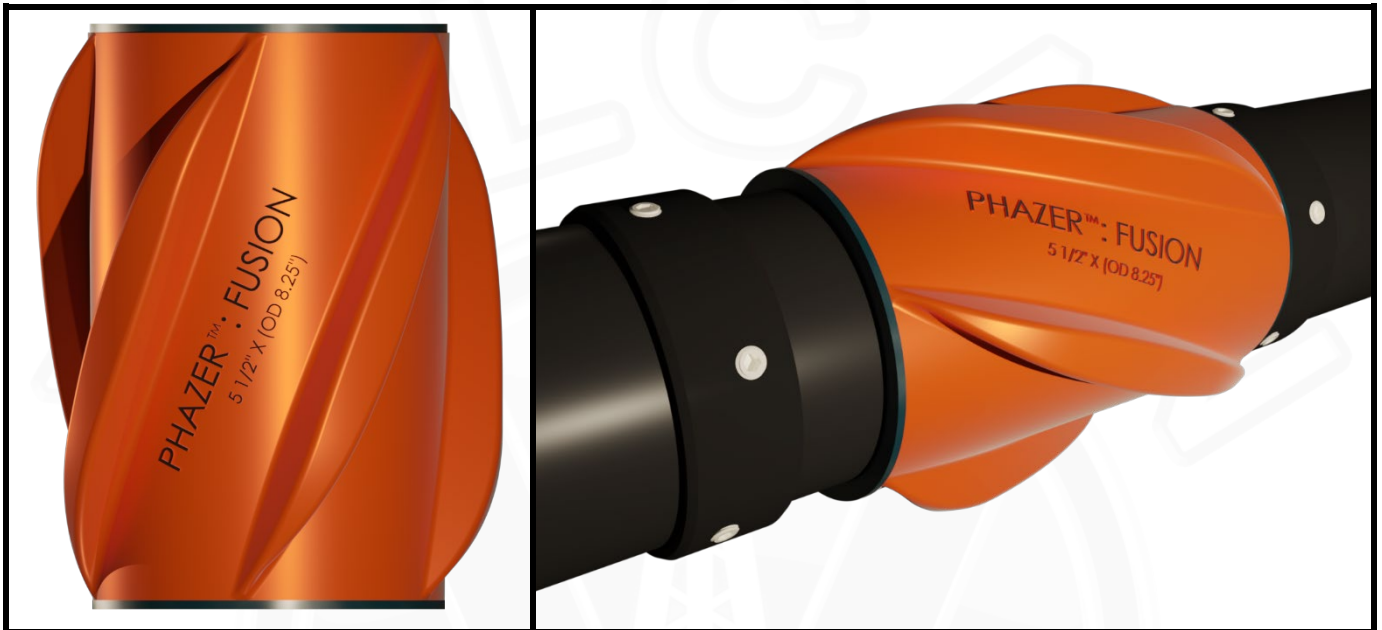
THE LOW TORQUE BEARING CENTRALIZER...





# **PHAZER™: FUSION**

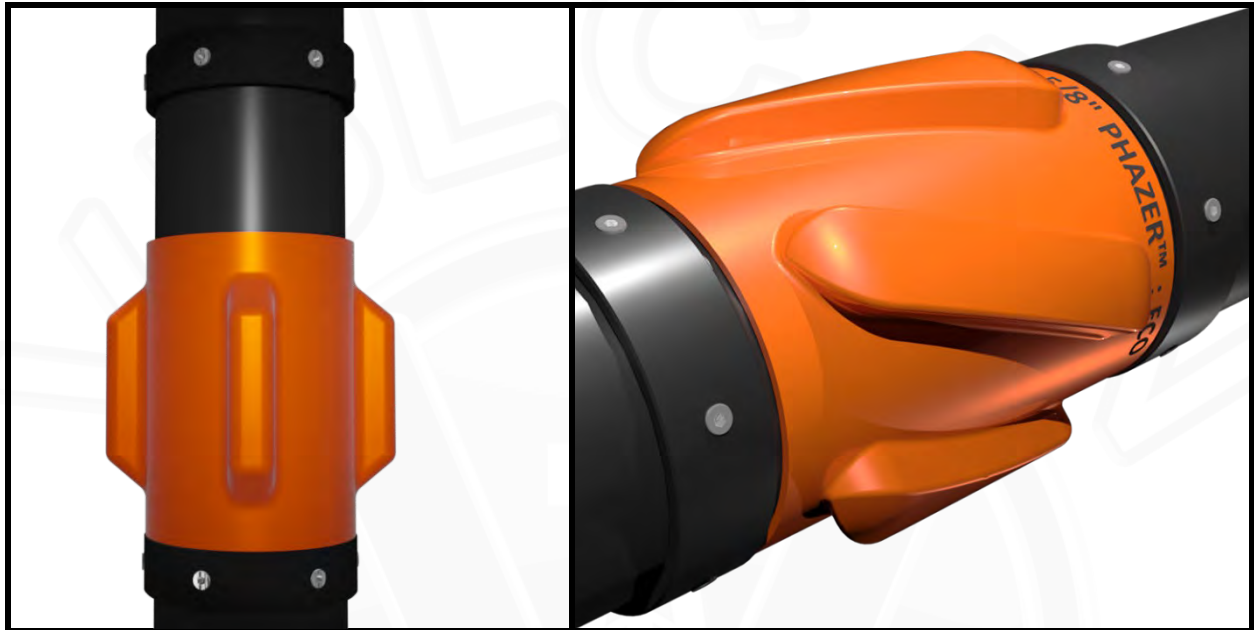
Vulcan's PHAZER™: FUSION is a low friction; non-metallic centralizer designed specifically to reduce torque and drag in challenging wellbores.



- High compressive strength & high impact resistant.
- Durable and wear resistant.
- Low Friction offering Torque and Drag reduction.
- Non-metallic, lightweight low-density material.
- Proprietary Non-metallic, lightweight low-density material.
- Steel band swedge rings reinforce the lateral load strength.
- Designed to be rotated during RIH and through-out cement displacement.
- Suitable for deviated and ERD applications.
- Free flow solid blade design provides on average 85% guaranteed Stand-off and cement placement.
- Spiral and Straight Blade Configurations available.
- Technically superior to other leading brand polymer/composite centralizers.
- Cost effective.
- Sizes available 2 7/8" – 9 5/8".
- Please contact [Sales@Vulcan-CP.com](mailto:Sales@Vulcan-CP.com) for further information.

## **PHAZER™: ECO**

*Vulcan's PHAZER™: ECO is a fabricated steel solid body gauge hole centralizer suitable for intermediate well bores.*



- One piece steel, heavy duty centralizer.
- Suitable for intermediate well bores.
- Positive stand-off & Maximised flow-by.
- Free flow solid blade design improves cement placement.
- Bi-directional fitment.
- Excellent side loading > 20 tonnes.
- Spiral bladed or Straight Blade options available.
- Integral stop collar option available.
- Design Options available for Casing While Drilling (CWD) Applications.
- Size Range 2 7/8" – 30".
- Please contact [Sales@Vulcan-CP.com](mailto:Sales@Vulcan-CP.com) for detailed specifications.

## **PHAZE-LOK™**

The Vulcan PHAZE-LOK™ is a range of tubular stop collars designed to be run in conjunction with the VCP range of centralizers.

All stop collars offer high holding forces with tapered lead in profiles for good flow by and reduced ECD's. For use on all types and grades of casing/liners and in some cases sand screen completion tubulars.

All stop collars are designed by our experienced Design team in the UK and manufactured at API Q1 and ISO 9001:2015 qualified manufactured facilities always guaranteeing the best possible quality.

### **PHAZE-LOK™: ECO**

**Our 'ECO' brand for Standard Duty collar application. Robust construction with Good Holding force, featuring Stainless Steel Knurled Set Screws...**

- Standard Duty Stop Collar.
- Chamfered edges.
- Good Holding force >10 tonnes.
- Knurled Set Screws.
- Stainless Steel Suitable for Chrome Tubulars.

Contact: Sales@Vulcan-CP.com



### **PHAZE-LOK™: HD**

**Our 'GO-TO' for Heavy Duty collar applications. Robust construction with High Holding force, featuring Offset Stainless Steel Knurled Set Screws...**

- Heavy Duty.
- Chamfered edges.
- High Holding force >20 tonnes.
- Offset Knurled Set Screws.
- Stainless Steel Suitable for Chrome Tubulars.
- Run in conjunction with PHAZER™: FLEX Under-Reamed and PHAZER™: SR centralizers.

Contact: Sales@Vulcan-CP.com



# **PHAZE-LOK™**

## **PHAZE-LOK™: HD-TT**

**Our Engineered Tight-Tolerance, Heavy Duty collar for use where space is at a premium.**

Long Tapered lead-in with very low Annular profile. Robust construction with High Holding force, featuring Offset Stainless Steel Knurled Set Screws...

- Heavy Duty Stop Collar.
- Long Tapered lead-in.
- High Holding force >20 tonnes.
- Offset Knurled Set Screws.
- Stainless Steel Suitable for Chrome Tubulars.
- Run in conjunction with PHAZER™: FLEX-TT centralizers.

Contact: Sales@Vulcan-CP.com



## **PHAZE-LOK™: KEVLAR**

**The PHAZE-LOK Kevlar™ Composite bonded on stop collar that accompanies the Vulcan Phazer™: Flex Under-Reamed centralizers.**

This virtually indestructible and bulletproof stop collar provides exceptionally high holding forces, Ideal for tight/close tolerances application.

- A moulded and bonded stop collar.
- Moulded directly onto casing/liner and sand screen joints.
- Maximised flow by area and reduced ECD's.
- Extremely high holding force in excess of 50 tonnes.
- Non-metallic, fully millable and drillable material.
- Fully compatible with Chrome Tubulars.
- No set screws or the potential for carbon impregnation.

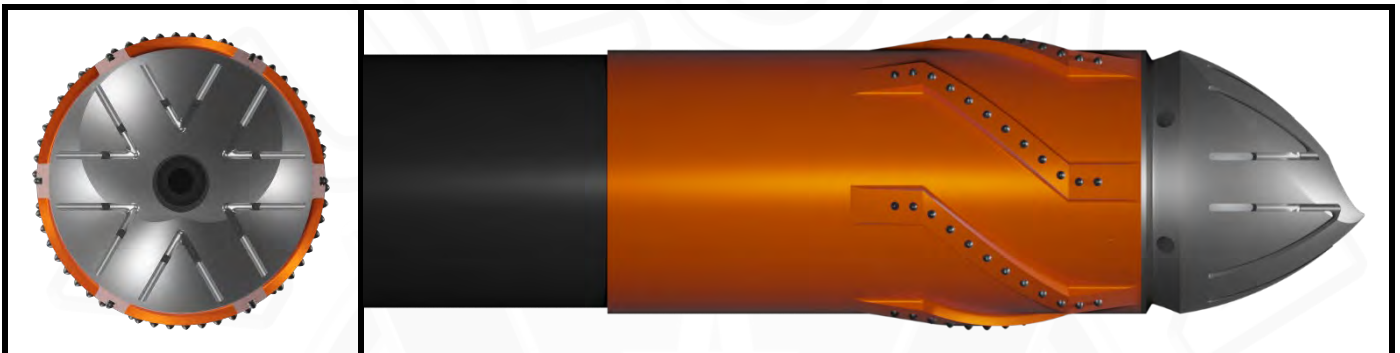
Contact: Sales@Vulcan-CP.com



## **PROBE™**

*The Next Generation in Reaming & Guide Shoe Technology...*

*Vulcan's PROBE™... A sophisticated range of Reamer & Guide Shoes designed to assist casing/liner/screen running when difficult hole conditions are anticipated.*



- High strength Eccentric Well bore seeking nose.
- Profiled nose design reduces drill-out times whilst maintaining unit strength and integrity.
- Ballistic Tungsten Carbide cutting structure.
- V-LOK™ Cement Anchoring system, binding nose within cement, inhibiting rotation, enabling smoother/quicker drill-out.
- Flow Ports offer 360° flow area coverage aiding hole cleaning and cement placement.
- Slick Body allow for easy passage through swelling / collapsed wellbores, eliminating pack off potential.
- High Flow 5Kpsi & 10Kpsi Valve exceeding API 10F IIIC certification.
- Single, Double & Auto-Fill Valve options available.
- Various cutting structure options available.
- Nose available in Aluminium or Phenolic, Concentric or Spade.
- Fully drillable with PDC & Rollercone drill bits.

Please contact [Sales@Vulcan-CP.com](mailto:Sales@Vulcan-CP.com) for test reports.

## ***PROBE™: BORG***

*Vulcan's PROBE™: BORG...*

*The Next Generation in Reaming Technology.*

**HIGH STRENGTH, THERMALLY STABLE, QUICK DRILL-OUT COMPOSITE NOSE.**



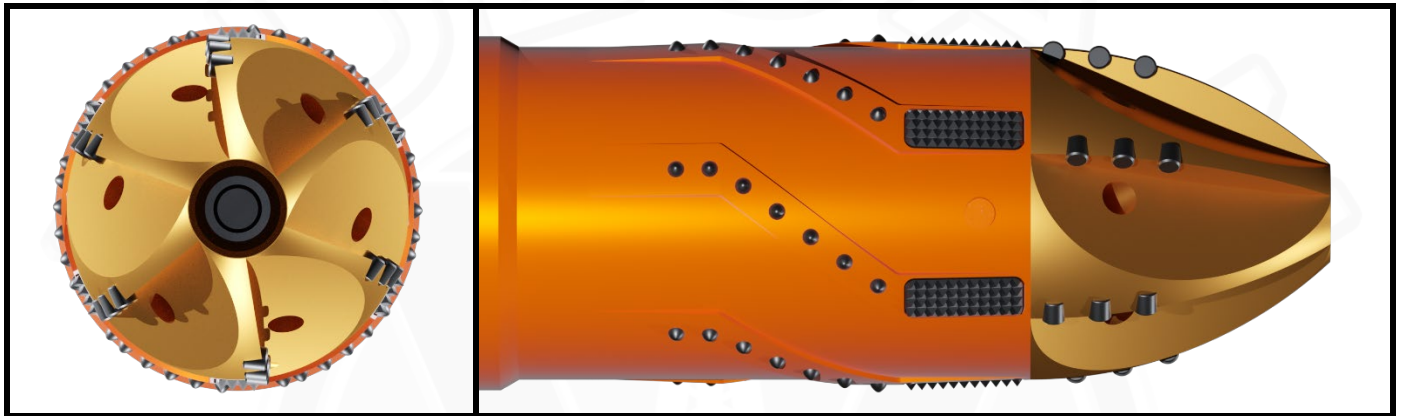
- High strength Eccentric Well bore seeking nose.
- Eccentric high strength proprietary composite nose design reduces drill-out times whilst maintaining unit strength and integrity.
- Optimized cutting structure offers the capability to ream past obstructions with rotation or by reciprocation.
- Ballistic Tungsten Carbide cutting structure.
- High Flow 5Kpsi & 10Kpsi Valve exceeding API 10F IIIC certification.
- Single, Double & Auto-Fill Valve options available.
- Various cutting structure options available upon request.
- Nose port variations available upon request.
- Fully drillable with PDC & Rollercone bits.

Please contact [Sales@Vulcan-CP.com](mailto:Sales@Vulcan-CP.com) for test reports.

# **PROBE™: DISRUPTOR**

**Vulcan's PROBE™: DISRUPTOR...**

**An Engineered Casing shoe, with additional reaming technology, for poor hole conditions, collapsed sections and shale formations.**



- An Engineered Casing shoe, with aggressive reaming technology, for exceptionally poor hole conditions, collapsed hole sections and shale formations.
- Ballistic Tungsten Carbide cutting structure.
- Improved and more aggressive reaming alloy bronze nose structure featuring PDC cutters.
- Reaming cutting structure as per Probe™ design.
- Maximized flow by area as per Probe™ design.
- 360° circulating flow ports.
- High Flow 5Kpsi & 10Kpsi Valve exceeding API 10F IIIC certification.
- Single, Double & Auto-Fill Valve options available.
- Fully drillable with PDC & Rollercone drill bits.

Please contact [Sales@Vulcan-CP.com](mailto:Sales@Vulcan-CP.com) for test reports.

# PROBE™: FLOAT EQUIPMENT

**A full range of guide shoes and premium float equipment, that surpasses API 10F IIC and manufactured in accordance with API 5CT. Suitable for applications such as full casing strings and close tolerance liners...**



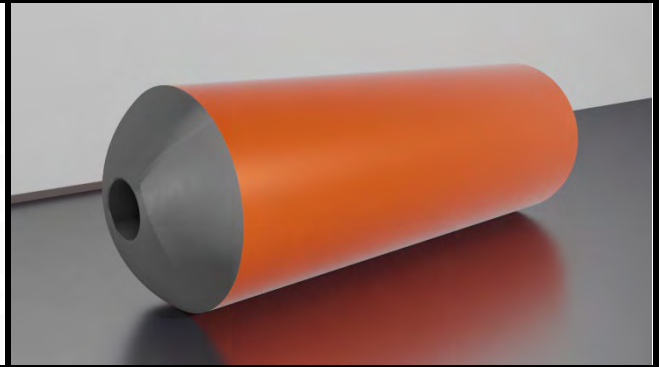
## **PILOT GUIDE SHOE**

A sophisticated range of Guide Shoes designed to assist casing / liner / screen running when difficult hole conditions are anticipated.

- Durable Eccentric & Concentric Profiled Nose available in Aluminium, Cement or Phenolic.
- Up Jet / Down Jet side ports available.

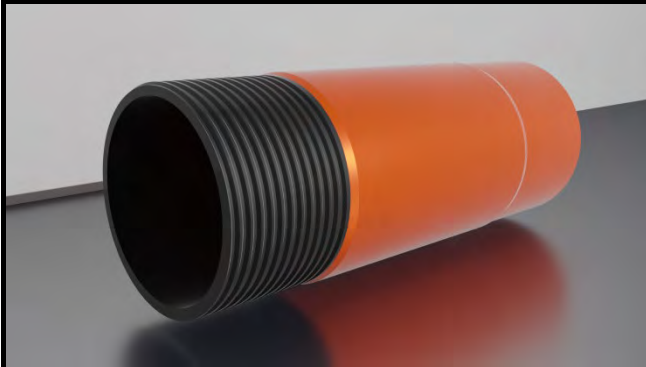
## **FLOAT SHOE**

A full range of guide shoes and premium float equipment, that surpasses API 10F IIC and manufactured in accordance to API 5CT. Suitable for applications such as full casing strings and close tolerance liners.



## **FLOAT COLLAR**

A full range of Float Collars, that surpass API 10F IIC and manufactured in accordance to API 5CT. Suitable for applications such as full casing strings and close tolerance liners.



- Back Pressure 5,000psi & 10,000psi.
- Temperature Rating up to 400° F.
- Single, Double & Auto-Fill Valve options available.
- Ball Catcher/Deflector options available.
- Fully drillable by PDC & Roller Cone drill bits.
- Conventional and Non-Rotating Cement Plugs available.

Please contact [Sales@Vulcan-CP.com](mailto:Sales@Vulcan-CP.com) for test reports...

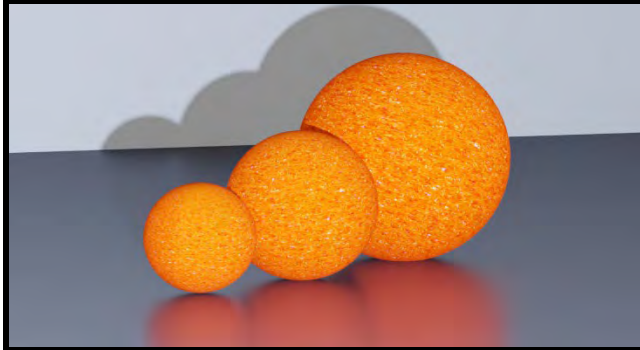


## **ACCESSORIES...**

**Vulcan Completion Products offer a complete range of Cement Plugs designed to surpass the requirements of API TR 10 TR6**

**We also offer a comprehensive 3rd party range of accessories to complement our own range of Tools.**

**Equipment is manufactured at API and ISO qualified facilities in Europe and Asia.**



### **PREMIUM CEMENT PLUGS**

The Vulcan Premium Cement Wiper Plug range has been designed to surpass the requirements of API TR 10TR6. Five Wiper fin design provides the best possible conditions for wiping and fluid segregation during cementing operations. The versatile VCP wiper plug systems operate equally well in both horizontal and vertical wells up to 400°F.

- Conventional and Non-Rotating Cement Plugs.
- Five fins for superior clean casing wipe.
- Sure-Lok anti-rotational design eliminates potential for drill out issues.
- Tapered insert and receptacle for secure plug landing.
- High Bump Pressure options available up to 10ksi.
- Operating range up to 400°F.
- Rupture Disk rating as per Operators requirements. 300psi – 800psi.
- Fully drillable by PDC & Roller Cone drill bits.
- Compatible with all common downhole WB and OB fluid types.

### **WIPERBALLS**

The Vulcan Premium Wiper Ball range allows you to clean the inside of drill pipe & casing, fast and efficiently with very little effort.

Please contact [Sales@Vulcan-CP.com](mailto:Sales@Vulcan-CP.com) for test reports...

## **KLING-ON™**

**Vulcan's KLING-ON™ Cable Protection Systems, The Next Generation in Control Line Protection...**

**The KLING-ON range provides downhole cables and control lines with protection during RIH, both across the coupling and at mid joint on the pipe.**



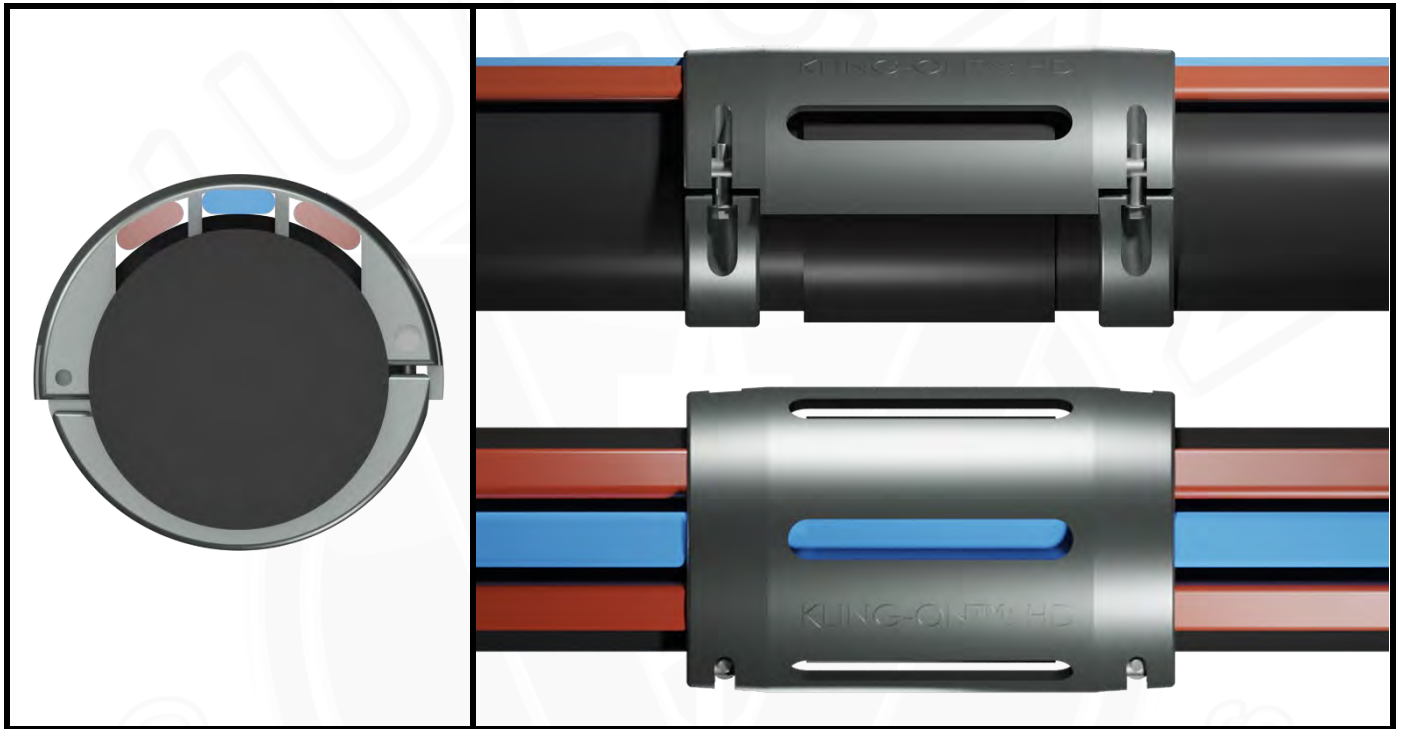
- Engineered cross coupling control line protector.
- Supports and protects cables & control during trips in and out of wellbore.
- Long channel design eliminates crimping/damage to the control lines/cable. This effectively increases the life cycle of the downhole equipment.
- Eight point holding force system - allowing for Max – Min API pipe tolerances.
- Tapered holding points offer greater holding force without damaging the control line/cables.
- Carbon or Stainless-Steel construction with galvanized coating.
- Single/Dual/Mid joint options available.
- Custom designs available for all configurations.

Please contact [Sales@Vulcan-CP.com](mailto:Sales@Vulcan-CP.com) for test reports.

## ***KLING-ON™: HD***

***Vulcan's KLING-ON™: HD Cable Protection Systems, The Next Generation in Control Line Protection...***

***The KLING-ON™: HD range provides downhole cables and control lines with protection during RIH, both across the coupling and at mid joint on the pipe...***



- Engineered cross coupling control line protector.
- Supports and protects cables & control during trips in and out of wellbore.
- Long channel design eliminates crimping/damage to the control lines/cable. This effectively increases the life cycle of the downhole equipment.
- Eight point holding force system - allowing for Max – Min API pipe tolerances.
- Tapered holding points offer greater holding force without damaging the control line/cables.
- Carbon or Stainless-Steel construction with galvanized coating.
- Single/Dual/Mid joint options available.
- Custom designs available for all configurations.

Please contact [Sales@Vulcan-CP.com](mailto:Sales@Vulcan-CP.com) for test reports.



## **VULCAN UK Ltd**

2 Abercrombie Court, Prospect Road,  
Arnhall Business Park, Westhill,  
Aberdeen, AB31 6FE.

[Sales@Vulcan-CP.com](mailto:Sales@Vulcan-CP.com)

Tel: +44 1224 446710

## **VULCAN (MENA)**

Unit 29-25, 29th Floor,  
Reef Tower,  
Cluster O JLT Dubai,  
UAE. PO Box 338508.

[Sales@Vulcan-CP.com](mailto:Sales@Vulcan-CP.com)

## **VULCAN (Azerbaijan)**

12th Floor SDN Plaza,  
10G A. Qayibov Street  
AZI 1029, Baku,  
Azerbaijan.

[Sales@Vulcan-CP.com](mailto:Sales@Vulcan-CP.com)



# **VULCAN**

***THE NEXT GENERATION***